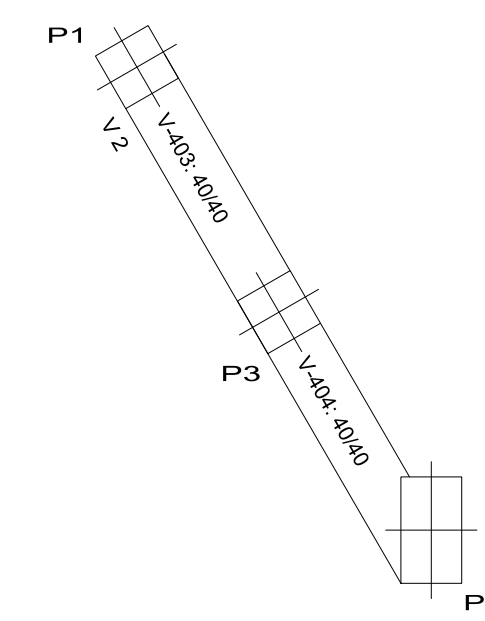
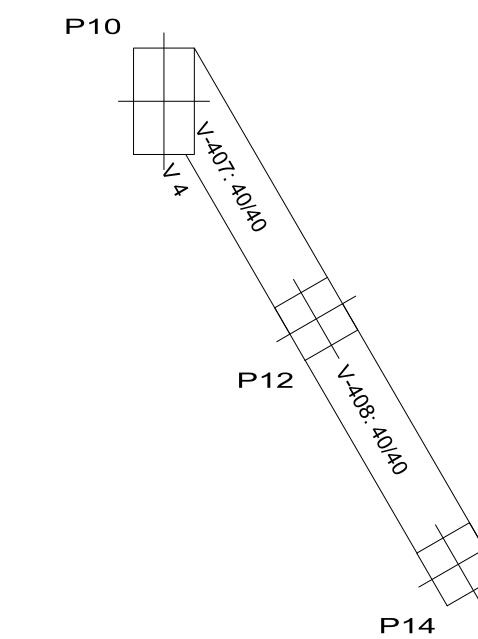
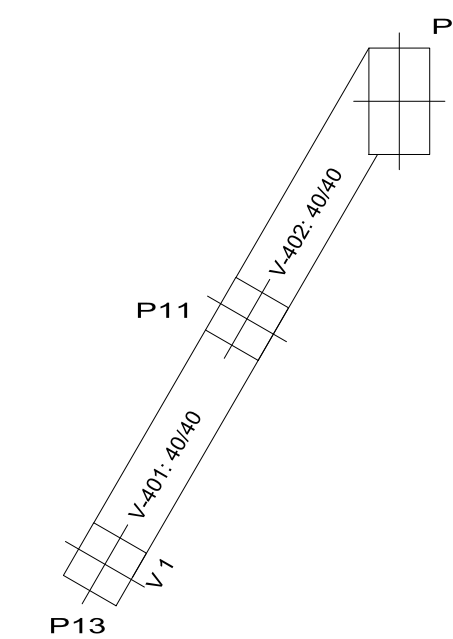
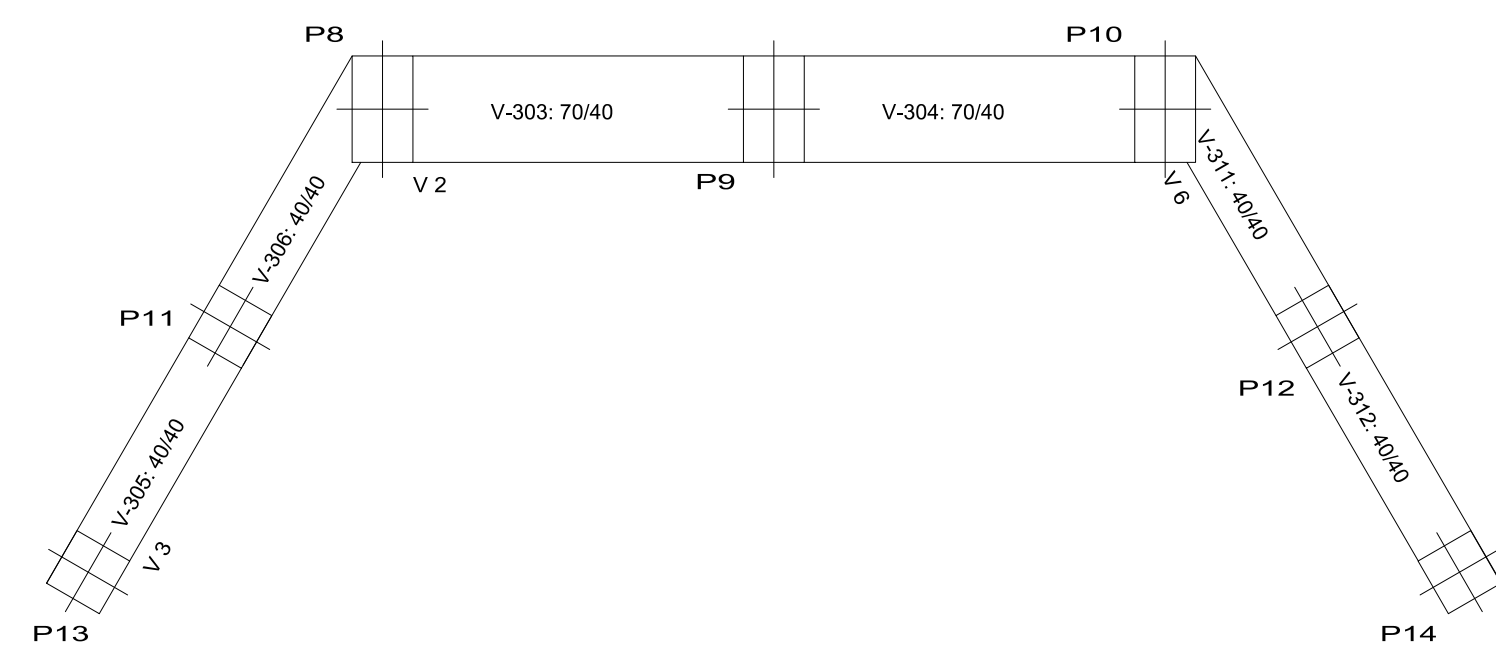
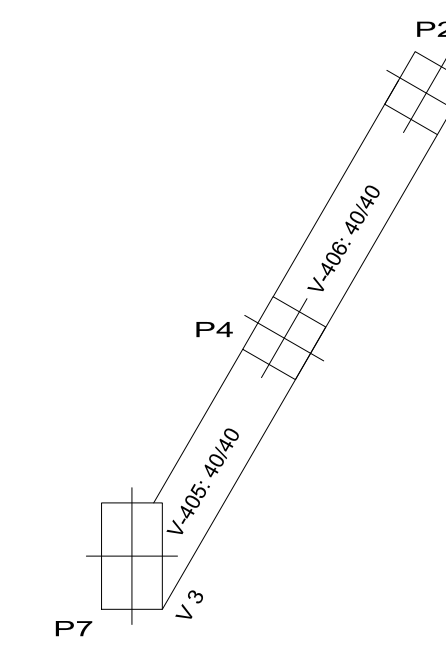


VIGA TABULEIRO
 Fôrmas
 Concreto: C25, em geral
 Escala: 1:50



VIGA FINAL ALA
 Fôrmas
 Concreto: C25, em geral
 Escala: 1:50



PROJETO: PROJETO ESTRUTURAL		DATA: 22/10/2023
LOCAL: RUA TEODORO AFONSO LAMOUNIER		
OBRA: PONTE ERMÍNIO ROSA		
Nº FOLHA: 5/9	DESCRIÇÃO: FÔRMAS VIGAS	
AUTOR: DEIBSON DIANNI DE OLIVEIRA ENGENHEIRO CIVIL CREA MG: 177769/D		PROPRIETÁRIO: PREF. MUNICIPAL DE ITAPECERICA