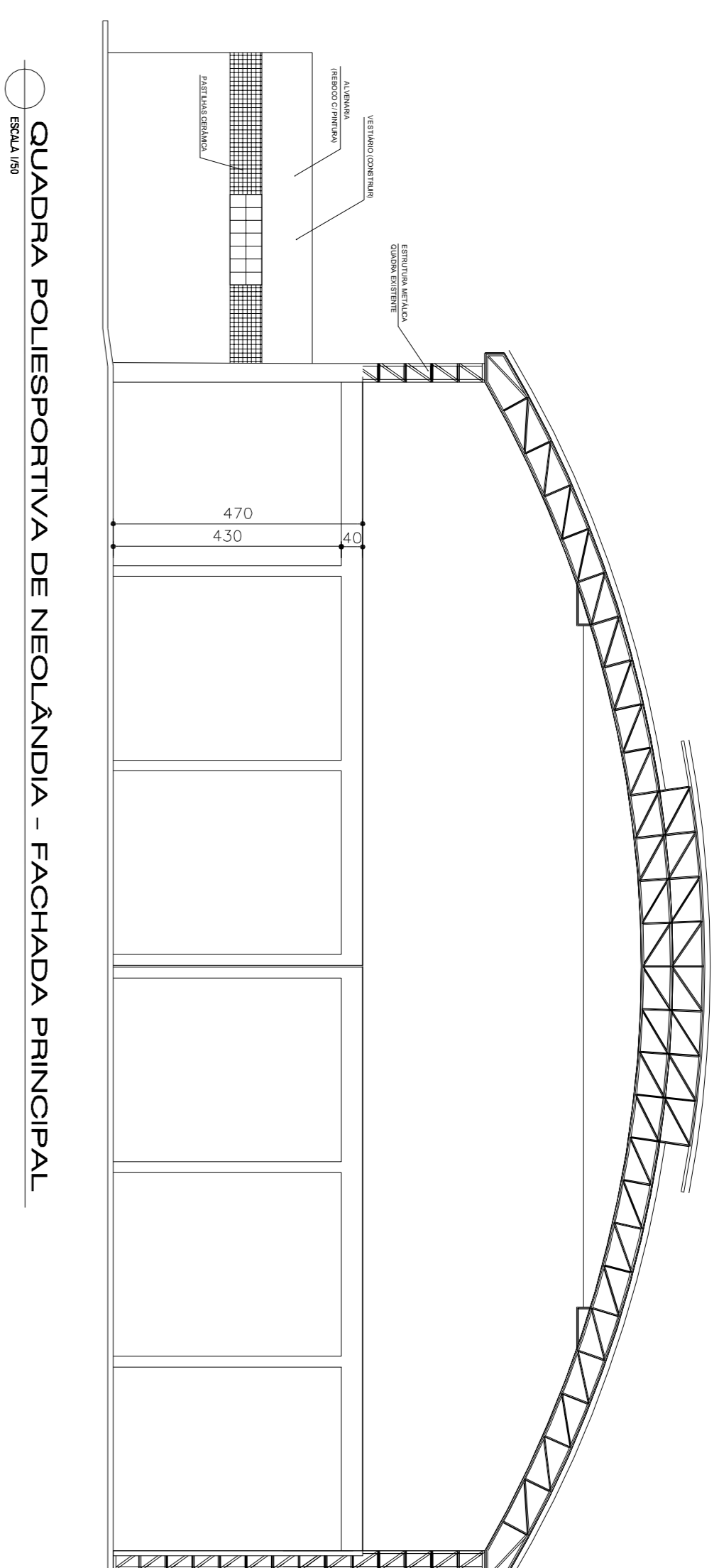
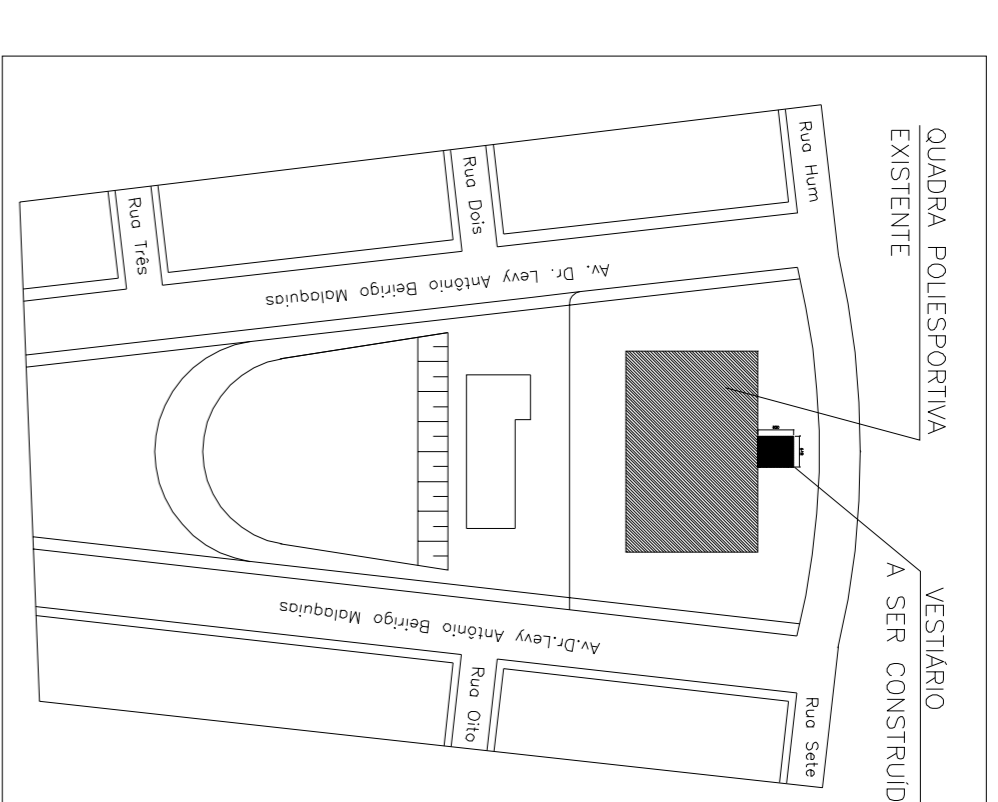


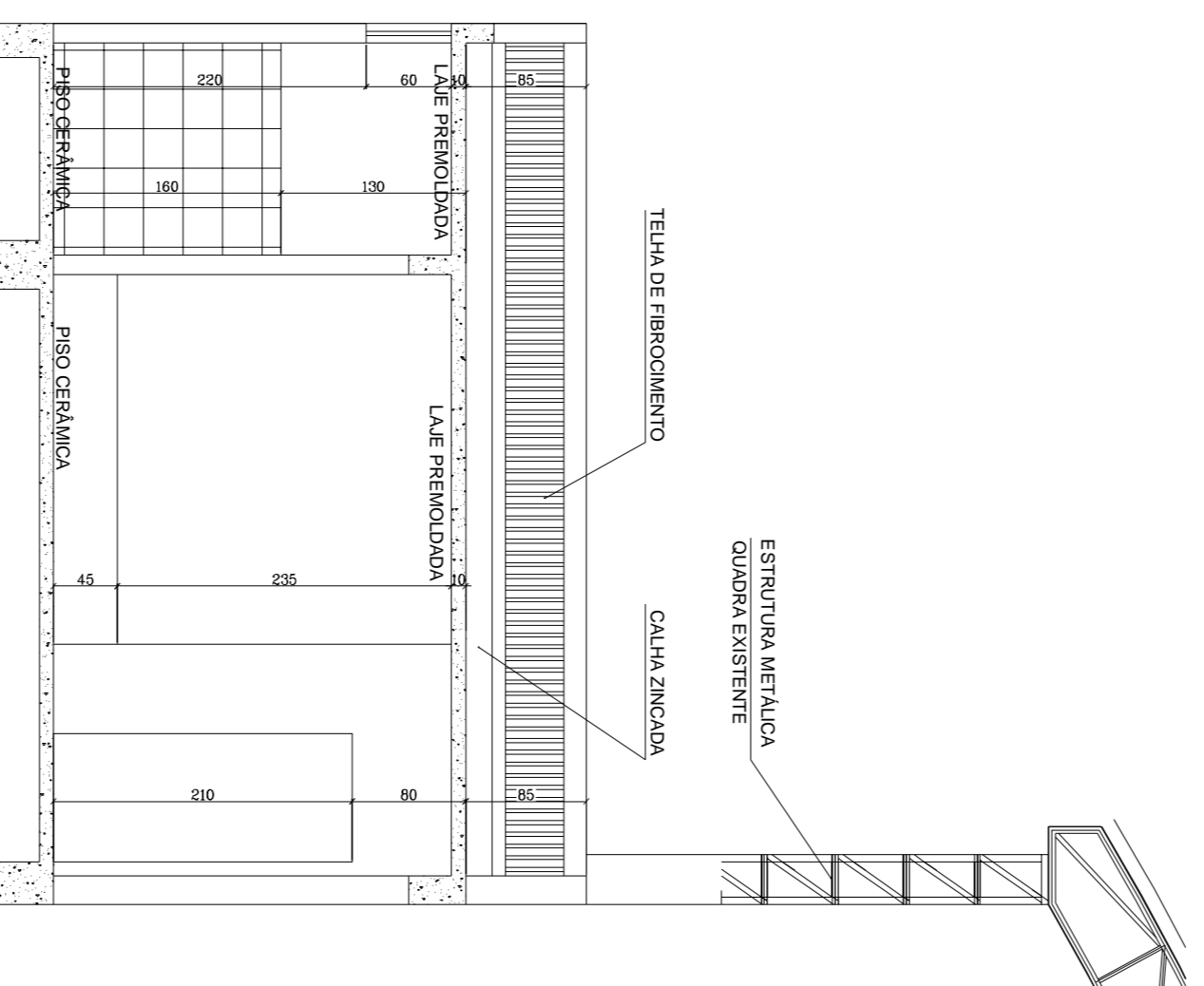
VESTIÁRIO - FACHADA PRINCIPAL
ESCALA 1/50



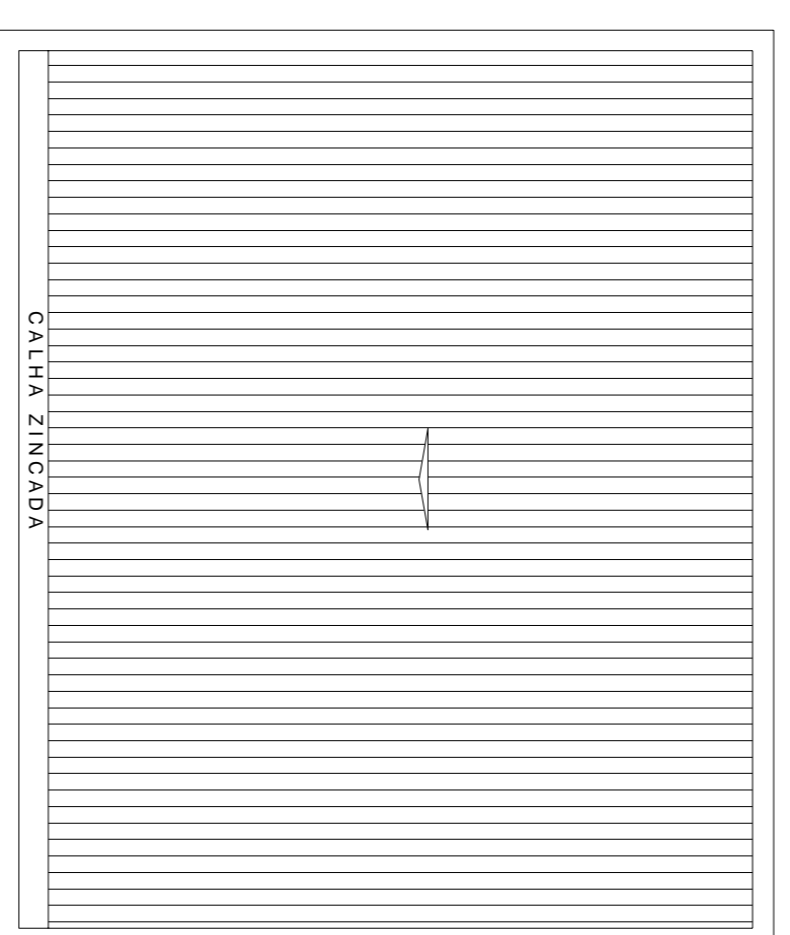
QUADRA POLIESPORTIVA DE NEOLÂNDIA - FACHADA PRINCIPAL
ESCALA 1/50



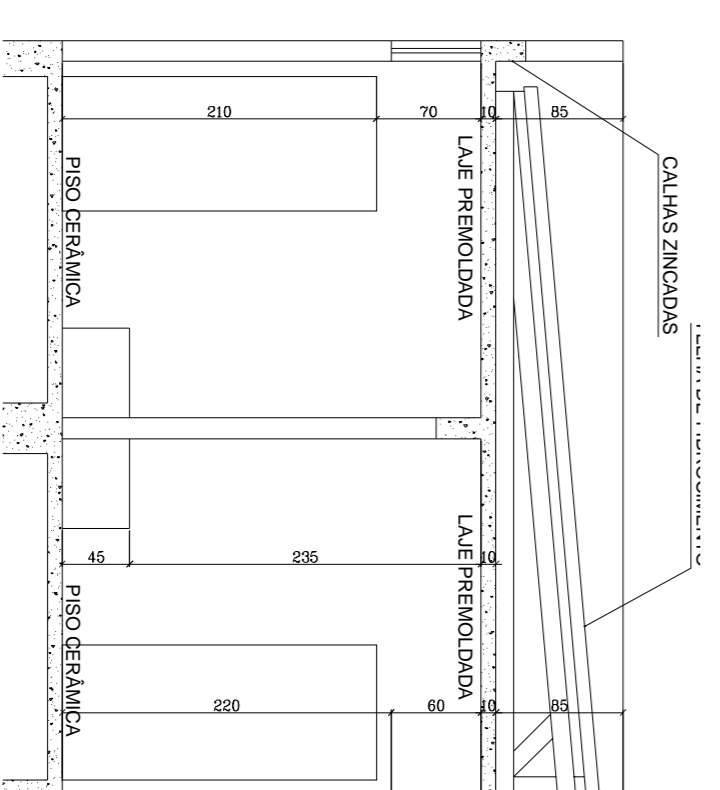
SITUAÇÃO
ESCALA 1/500



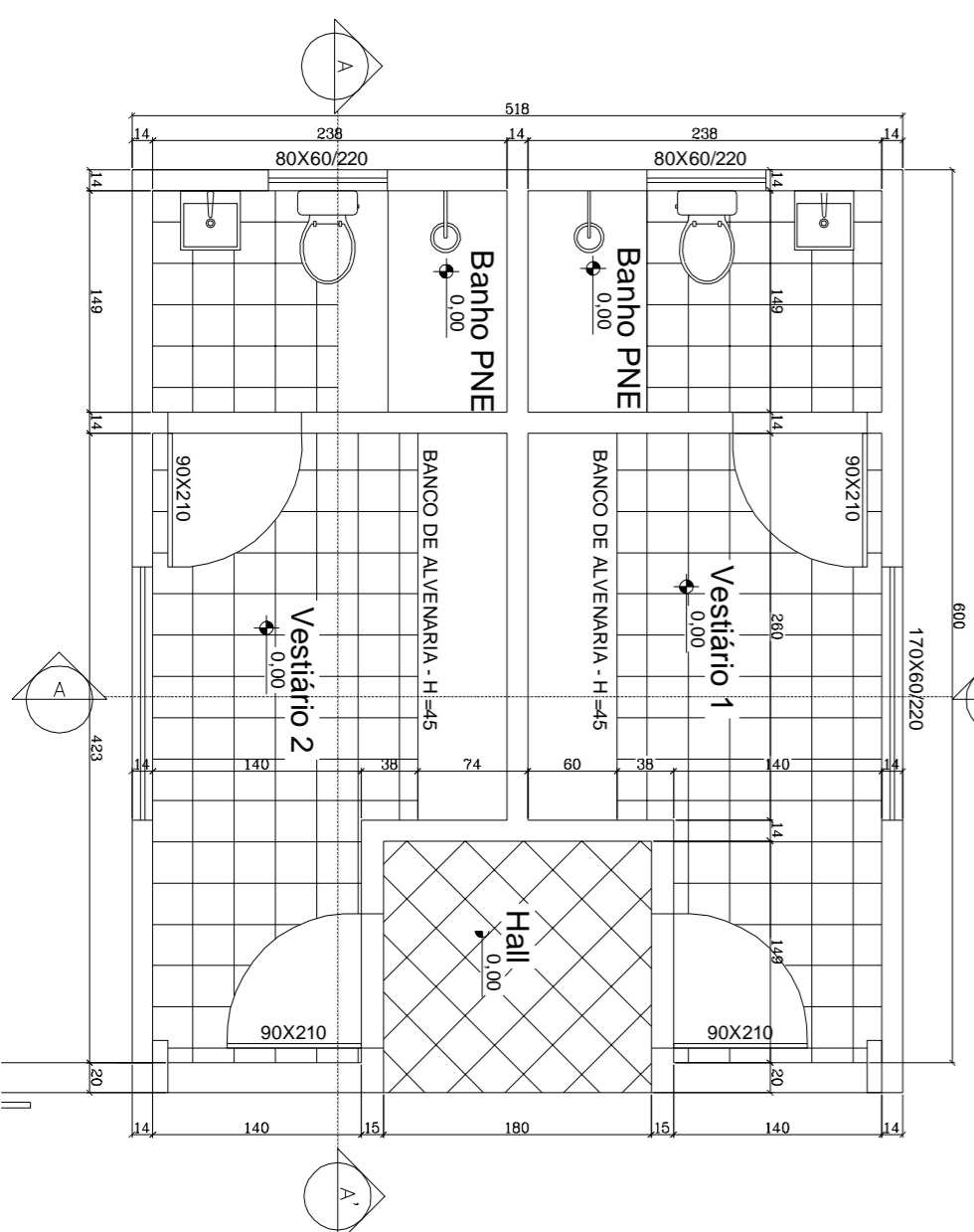
COORTE AA'
ESCALA 1/50



COBERTURA
ESCALA 1/50
TELA DE FIBROCEMENTO (1 x 70)

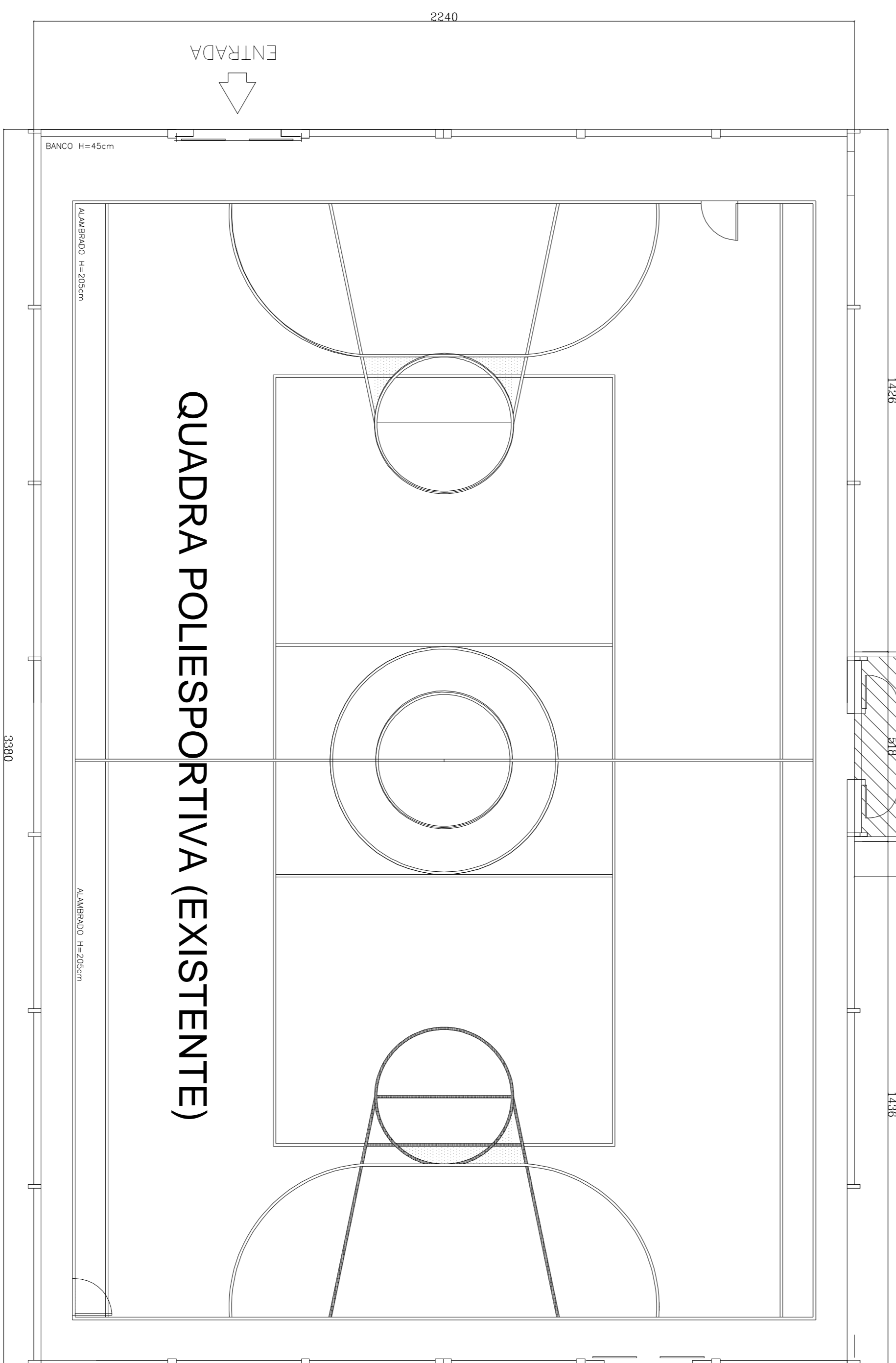
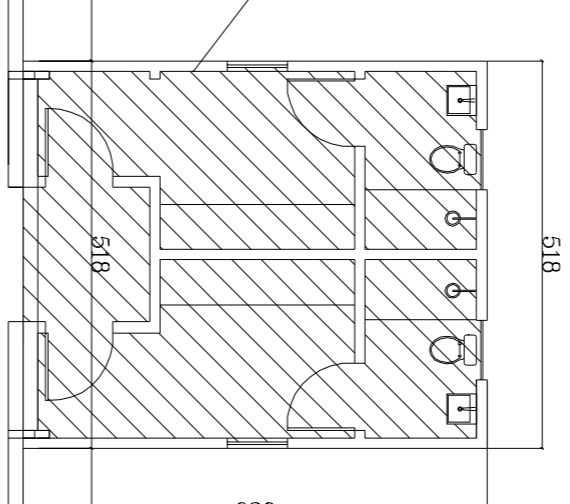


COORTE BB'
ESCALA 1/50



VESTIÁRIO - PLANTA BAIXA
ESCALA 1/50

(CONSTRUIR)
VESTIÁRIO



QUADRA POLIESPORTIVA (EXISTENTE)

DEMARCAÇÃO
ESCALA 1/50

ARQUITETÔNICO

NOME DO EMPREENDIMENTO VESTIÁRIO DA QUADRA DOM ANTONIO		FINALIDADE PÚBLICO
ENDEREÇO BAIRRO DOM ANTONIO		CONTEÚDO PLANTA BAIXA, CORTES, IMPLANTAÇÃO, DEMARCAÇÃO
PROPRIETÁRIO	CPF: 18.308.742/0001-44	TELEFONE
PREFEITURA MUNICIPAL DE ITAPEÇERICA - MG		CREA/ING 1604/72D
R.T. SÉRGIO AUGUSTO LÔBO - ENGENHEIRO CIVIL	FOHA 01/01	